



SUPPORTED BY
THE ROCKEFELLER FOUNDATION

Cities & Resilience : Progress & Challenges in Addressing Urban Adaptation in Asia

September 28-29, 2009; Bangkok



Gorakhpur City



Gorakhpur Environmental Action Group



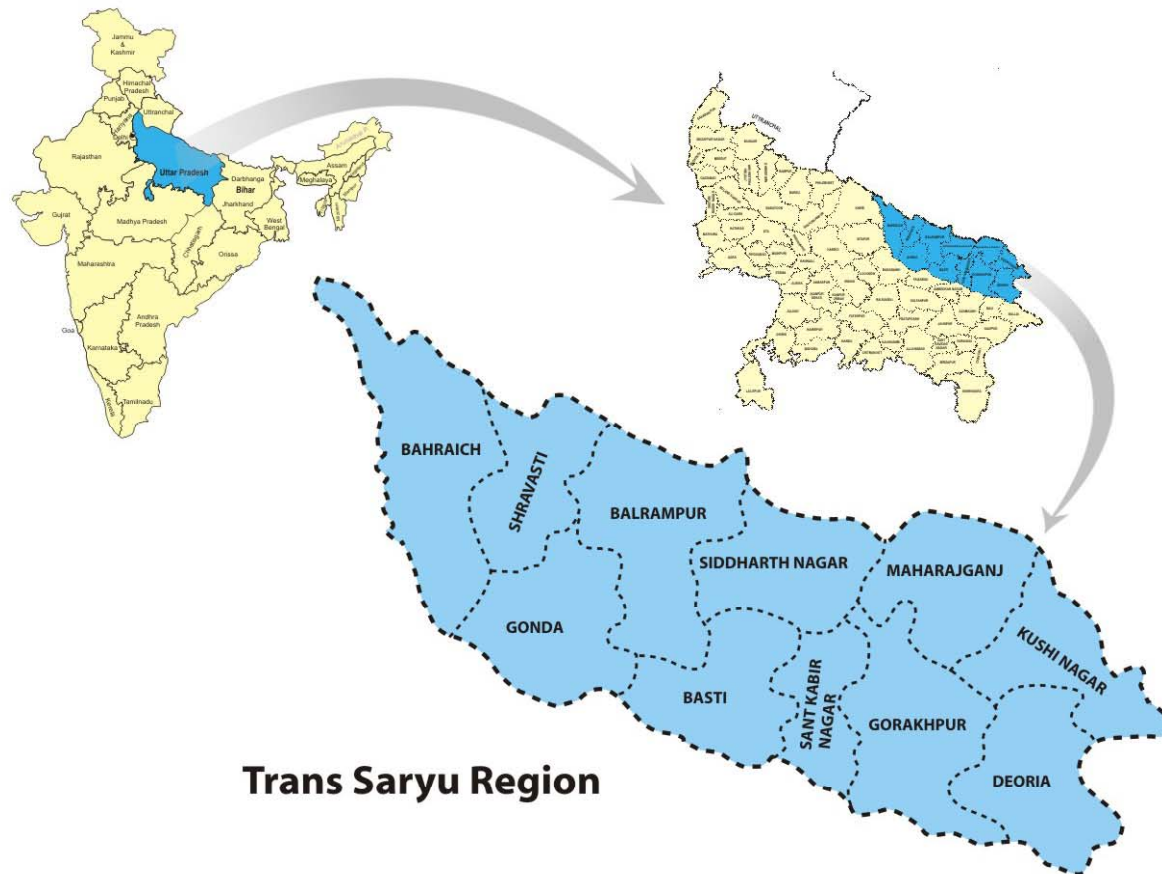
Supported by:

Rockefeller Foundation and



Institute of Social & Environment Transition

Gorakhpur- Location



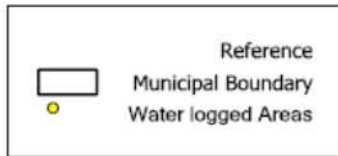
Trans Saryu Region

Activities at A Glance

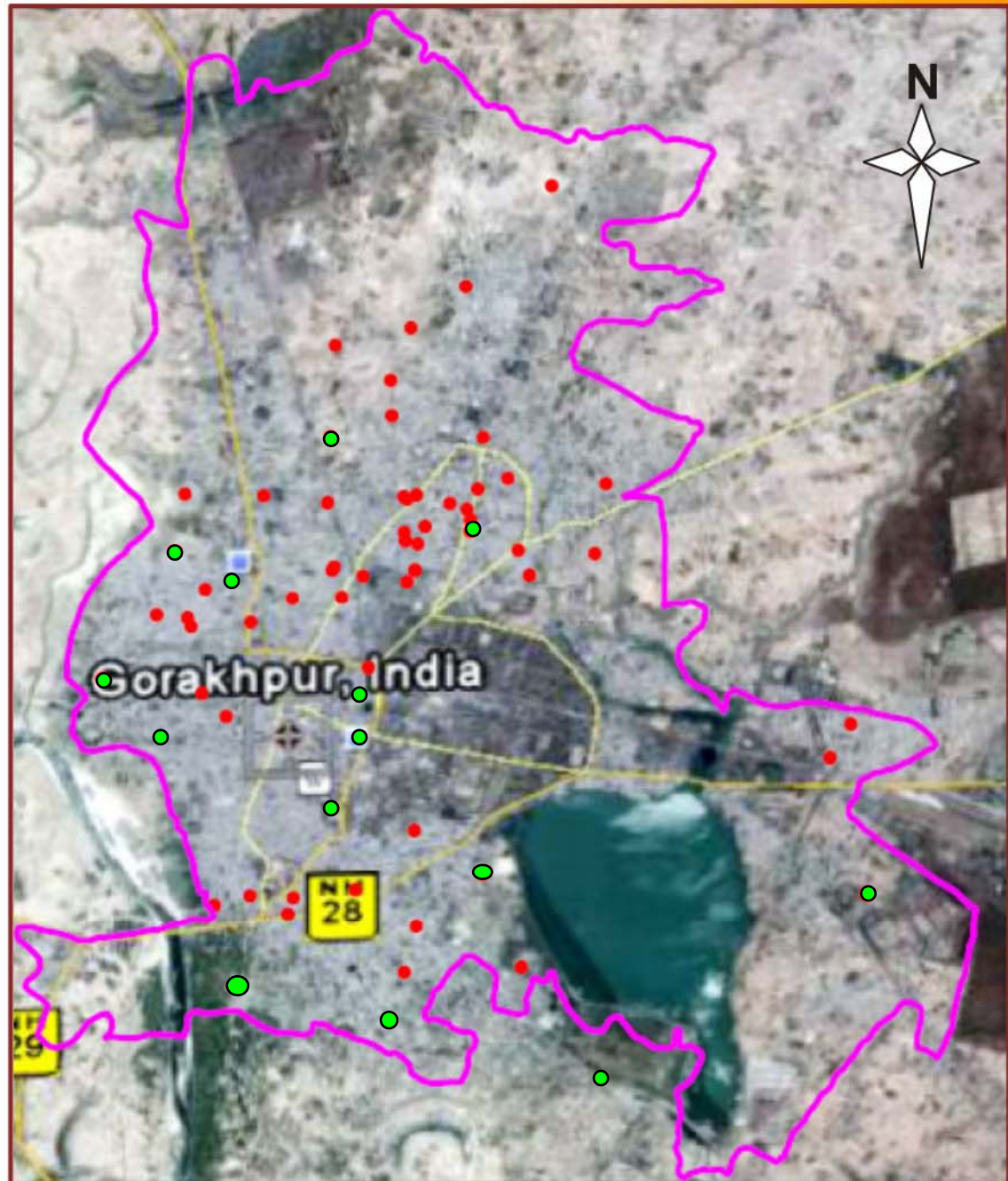
- **Consultations(& SLDs) at various levels**
 - Corporation, departments, citizens, elected representatives, academia,etc.
- **Secondary Data Collection And Field surveys**
 - Identifying Risks and affected areas
 - Vulnerable Groups/areas and causal factors
 - Adaptation Measures
- **Sectoral Studies**
 - Geo-Hydrological Study of city (Department of Geography, Gorakhpur University)
Proposed: -Impact of water logging on health of people in city (Community Medicine Department, BRD Medical College, Gorakhpur)
 - Energy Security and its cross sectoral linkages
- **Pilot Projects**
 - Decentralized Solid Waste Management (collaboration Municipal Corporation, M.G. Post Graduate College)
 - Proposed: School Education on Climate change vulnerabilities and Gorakhpur City
- **Short Studies/Actions**
 - Polythene Problems in City
 - Water Bodies Conservation: Case Ramgarh Lake



Sample Survey Area

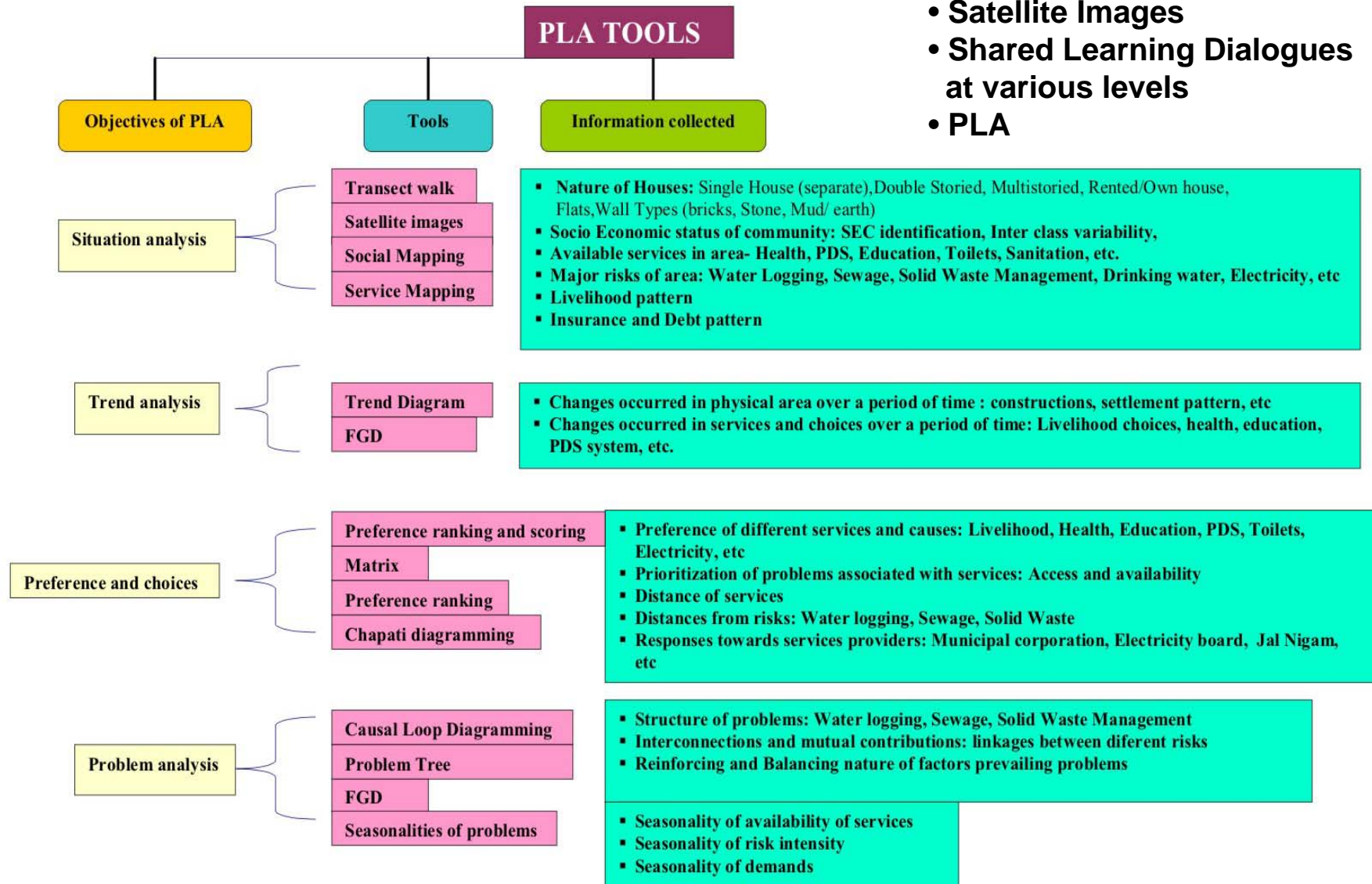


- Socio Economic Class
- Risk
- Geographical Coverage

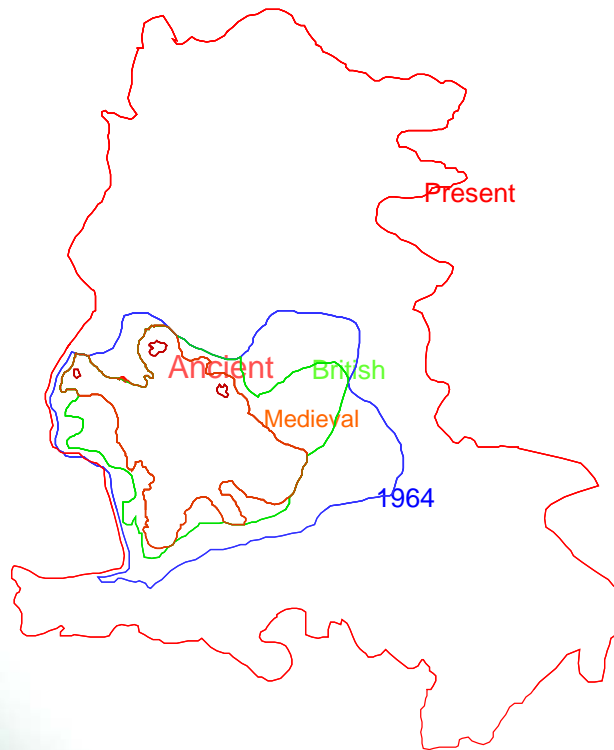


Survey Methodology

- Secondary data
- Satellite Images
- Shared Learning Dialogues at various levels
- PLA



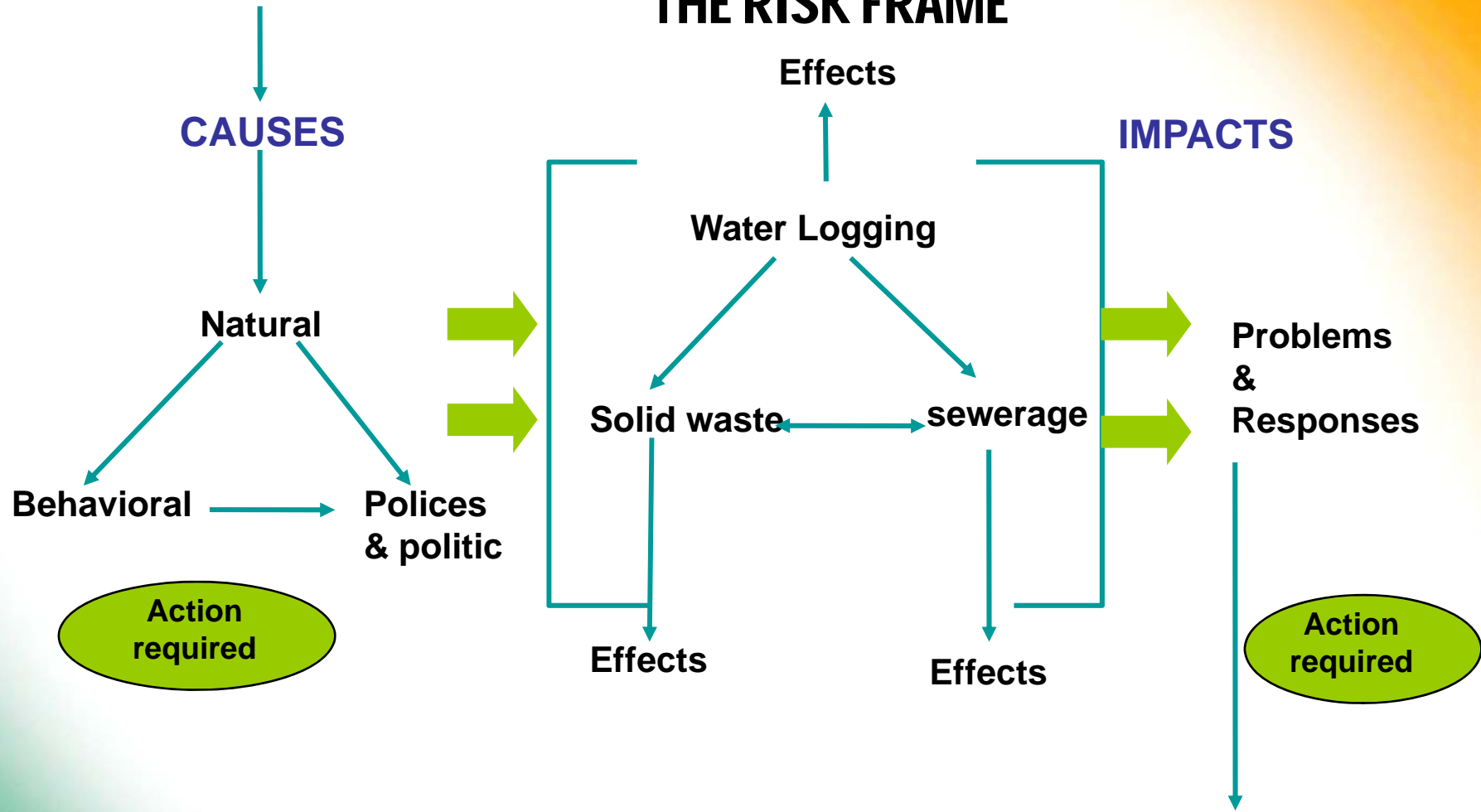
Gorakhpur City Horizontal Expansion



Distribution of Population



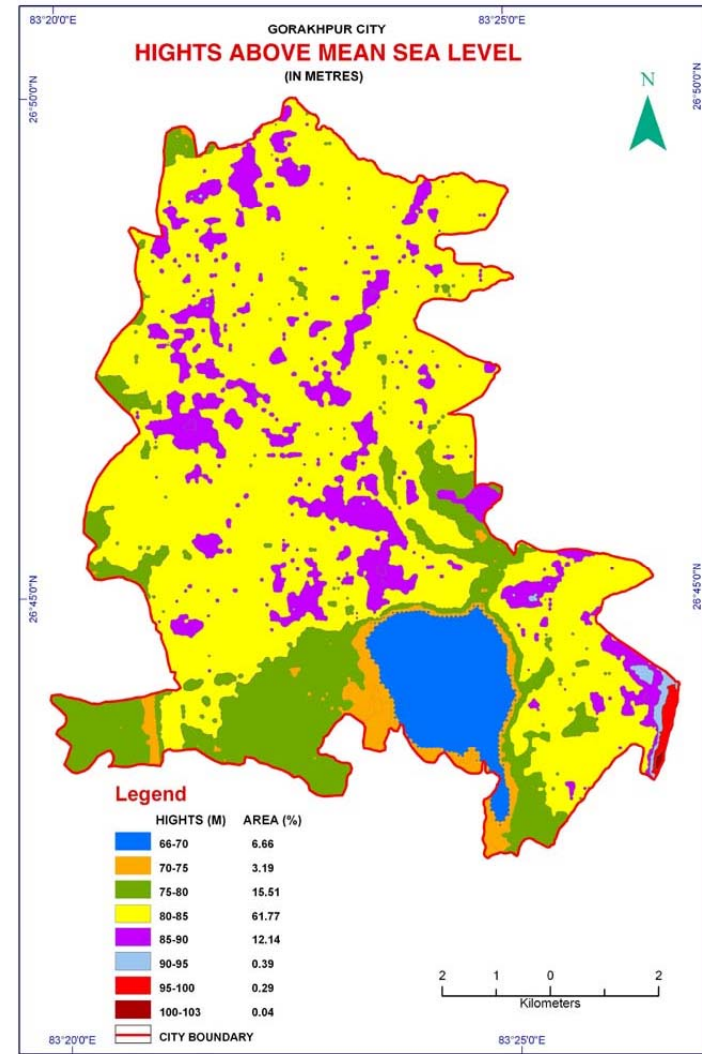
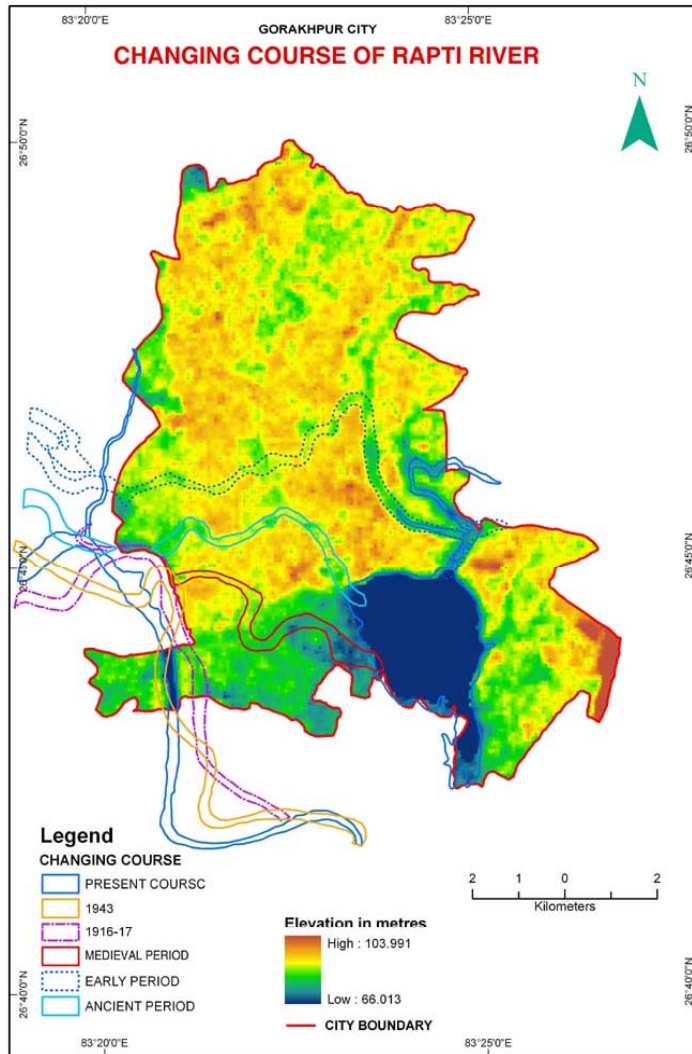
Climatic Change



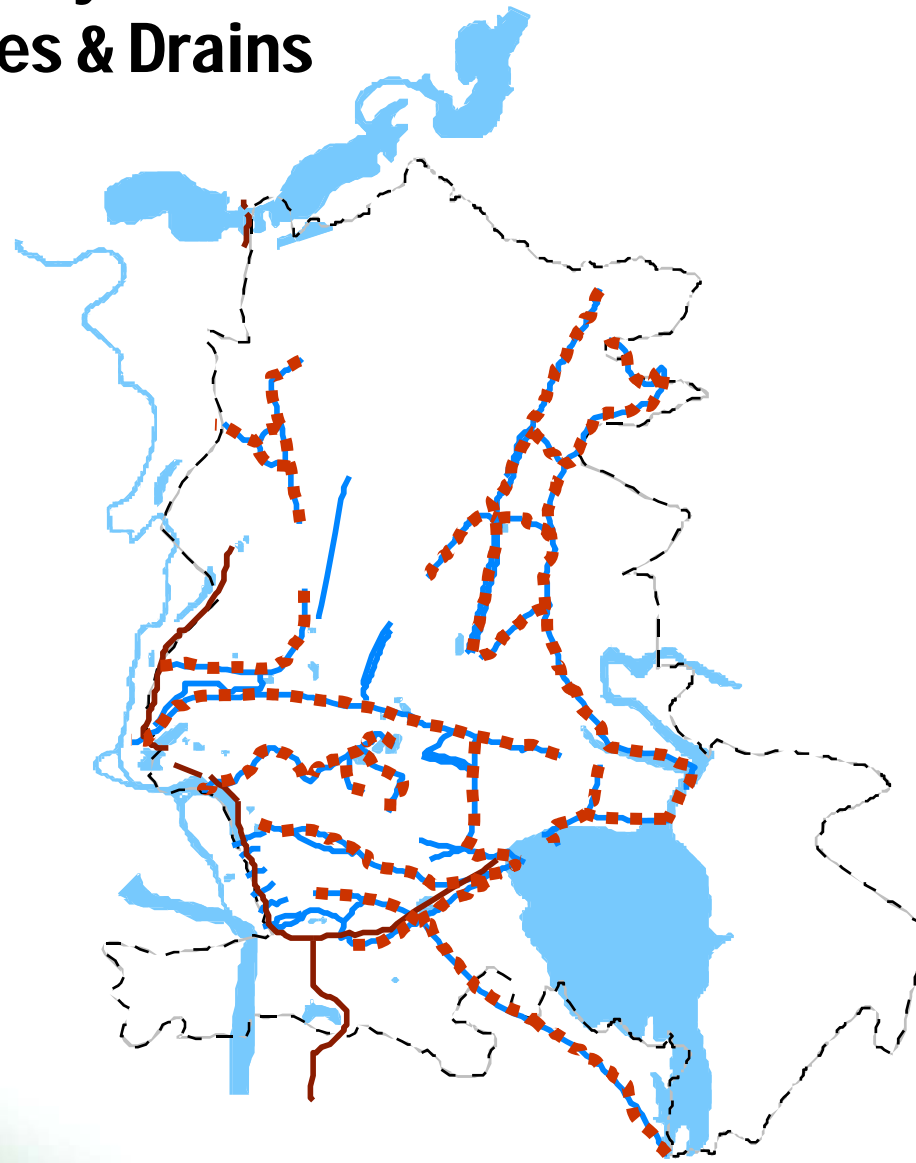
Adaptation



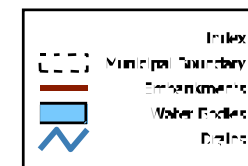
Natural Causes



Gorakhpur City Water Bodies & Drains



0 1000 m



Behavioral



- Lack of ownership of citizens (3% floating population)
- Low Level of Awareness
- High illiteracy level (37.43% illiteracy) *Secondary data
illiteracy concentration in LIG (43.90%) *Based on surveys
- Hopelessness and acceptance of present situation
- Inhabitation near work area (people on daily wage & informal services 30%)



POLICY

• Unplanned Land Use Pattern

S. No	Land use	1971		2001	
		Area in ha	% of total developed area	Area in ha	% of total developed area
1	Residential	1031.00	63.72	4103.00	72.10
2	Commercial	35.21	2.18	173.20	3.05
3	Industrial	56.05	3.46	445.00	7.82
4	Govt	90.34	6.08	161.00	2.83
5	Public and semi public	350.01	21.63	398.32	7.01
6	Park and open space	47.35	2.93	291.20	5.01
7	Transport	N.A	NA	117.10	2.07
	Total	1618.12	100.00	5689.12	100.00

- 25 organized colonies : Un-authorized (2% of total residential area)
- Inter-departmental Convergence
- Clarity on demarcation of wards
- Master Plan - merely a document ?
(Long term development)



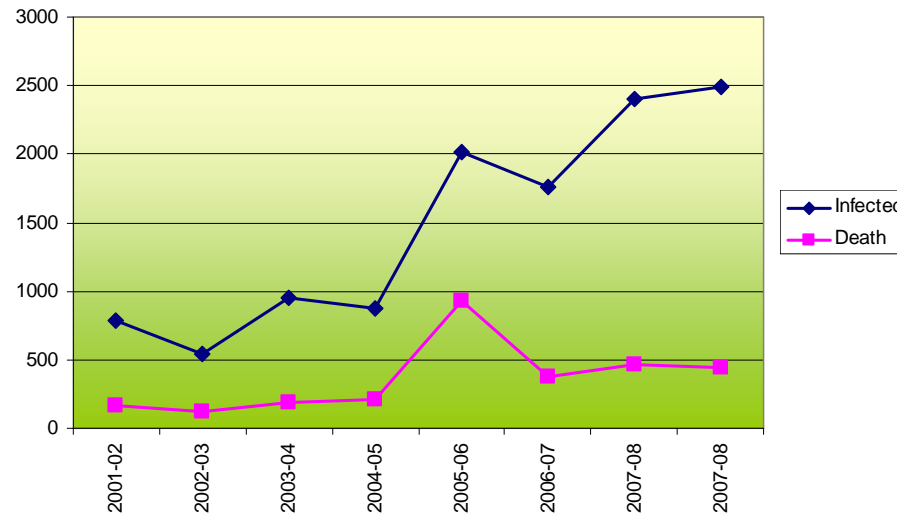
Health

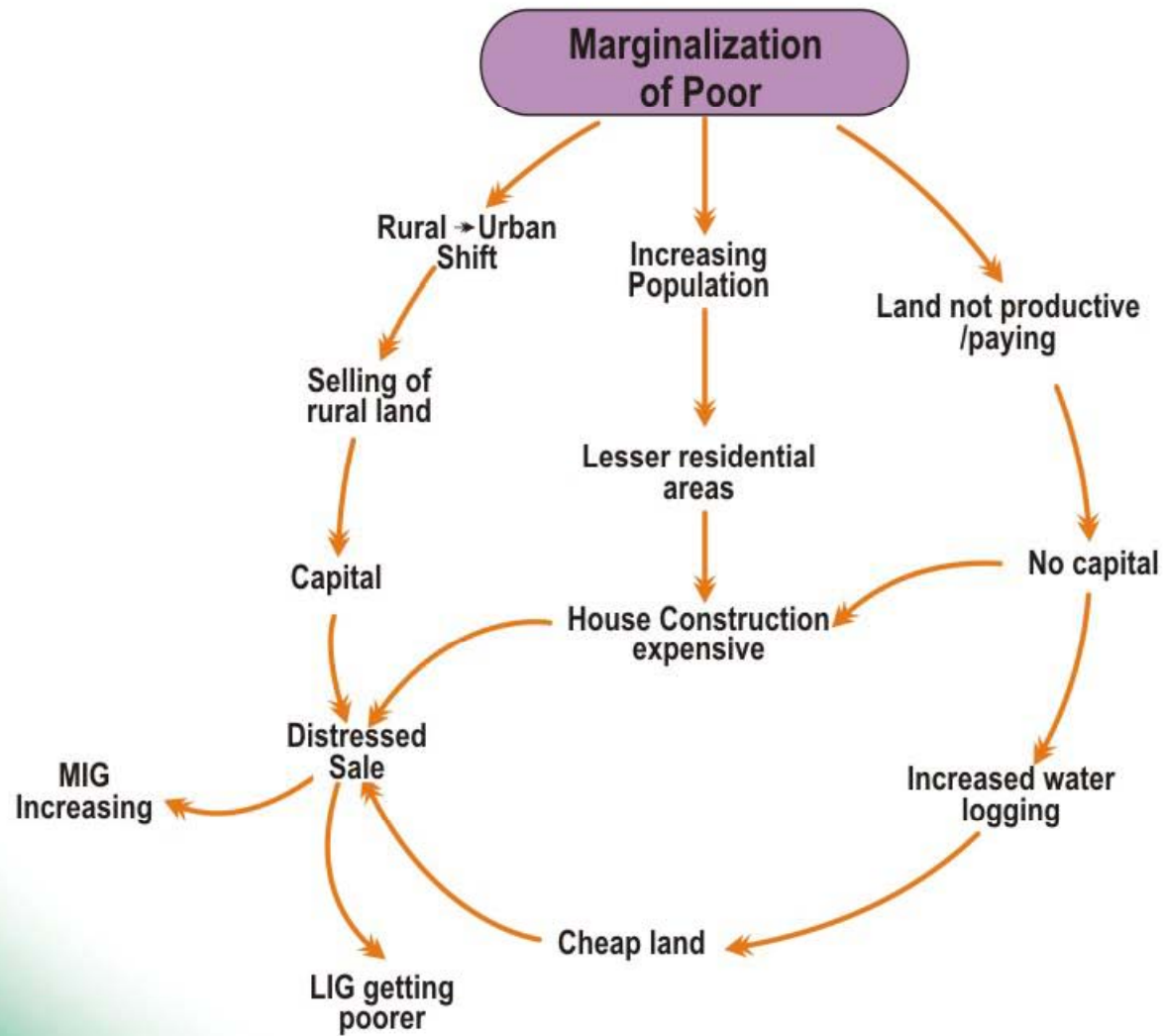
(Seasonality of Diseases)

Diseases

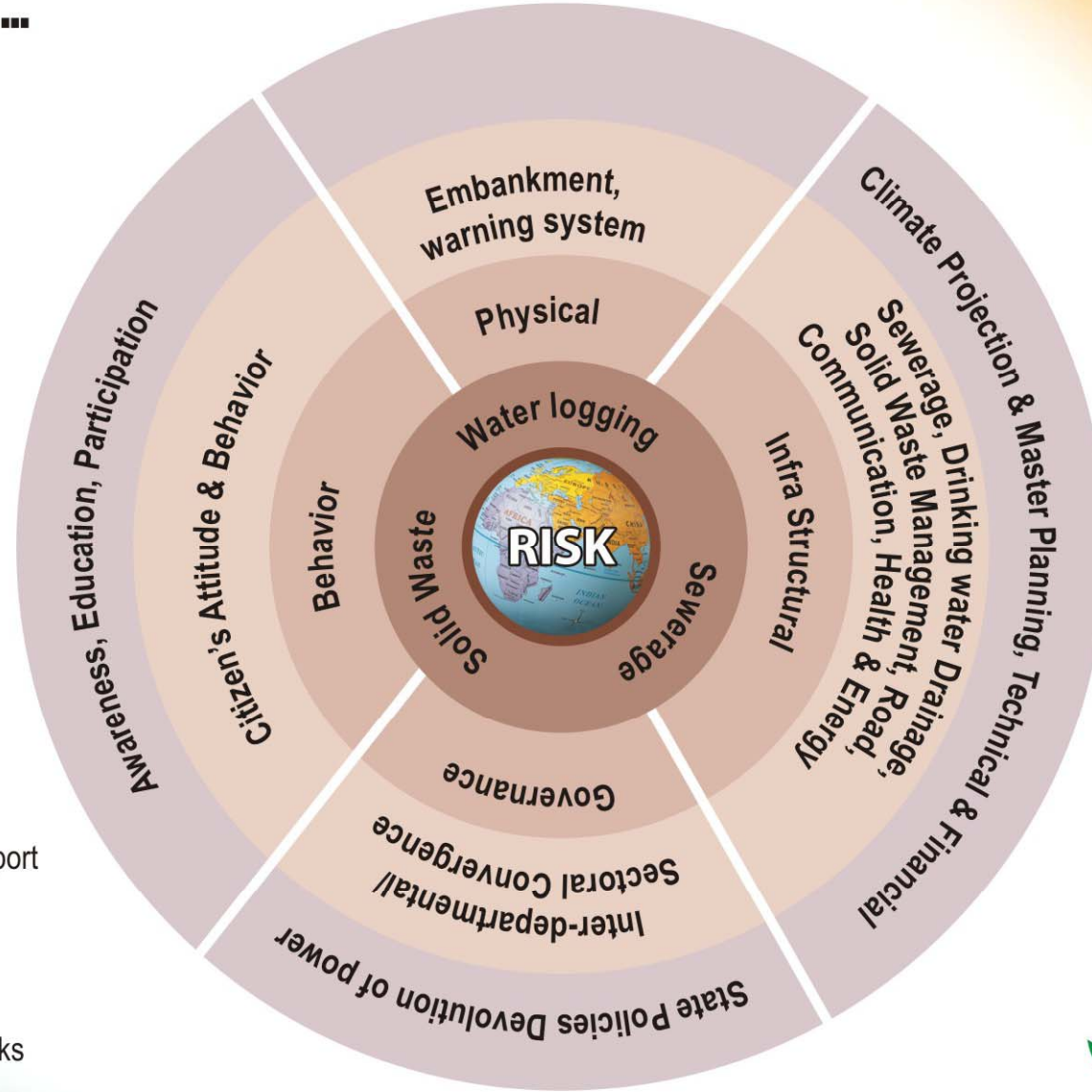
Malaria												
Encephalitis												
Food poisoning												
Diorrhoea												
Gastroententis												
Skin / allergy												
Viral infection												
Pneumonia												
Jaundice												
	Jan	Feb	Mar	April	May	June	July	Aug	Sep	Oct	Nov	Dec
Months												

Cases of Encephalitis





ACTION NEEDED ...



-  Needed Support
-  Action Areas
-  Sectors
-  Identified Risks



Thanks !



Gorakhpur Environmental Action Group

Post Box # 60, Gorakhpur-273 001 (INDIA)

Phone : 0551 2230004, Fax : 0551 2230005

E-mail : geag2@sancharnet.in, geag_india@yahoo.com

Website : <http://www.geagindia.org>